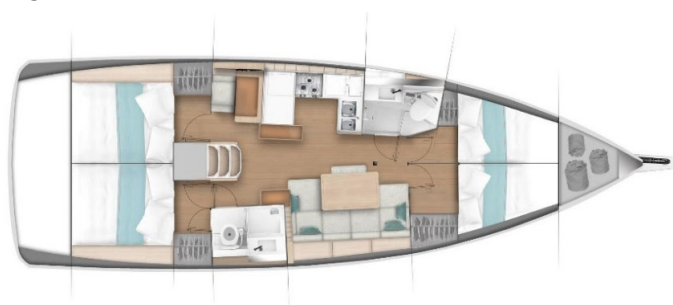


Sunsail 44

Specifications and Equipment List

Sunsail Charter Upgrades in BOLD

Length Overall:	43ft 11in 13.39m
Waterline Length:	39ft 4in 12m
Beam:	14ft 4.29m
Draft:	5ft 2in 1.60m
Fuel Capacity:	53 US Gal 200 L
Water Capacity:	140 US Gal 530 L
Engine:	Yanmar 45HP



CONSTRUCTION

- Single skin hull, hand-laid fibreglass, ISO gelcoat surface, protective “barrier coat”
- Infused fiberglass inner liner, easy access to grounding frame, relamination in stays attachment areas
- Prisma Process® injected deck, ISO gelcoat surface, discontinuous balsa block coring – 30 % weight savings as compared to traditional decks
- Twin rudders with self-aligning roller bearings and textile lines, to increase control and pleasure in navigation
- **Shoal keel**
- **Sunsail graphics**

DECK EQUIPMENT

- **Custom heavy duty battened charter mainsail**
- **Charter upgrade, heavy duty furling genoa with UV protection strips**
- **Stackpack LazyJack system in Sunsail blue with logo**
- **Proful genoa furler**
- **GRP Bowsprit with integrated stainless steel anchor roller**
- **1 Electric winch on coachroof (port side) in lieu of standard**
- **1 Extra winch on coachroof (starboard side)**
- 2 Genoa winches
- Winch handle
- Classic aluminium mast with double spreaders, deckstepped, cathedral geometry and split rigging
- Aluminium boom with rigid vang and lowered goose neck for easier handling
- Double backstay
- Running rigging: topping lift, mainsail halyard, genoa halyard, mainsheet, genoa sheets
- Standing rigging discontinuous 1 x 19 stainless steel wire
- Asymmetrical lazy bag with integrated lazy jacks
- Bow pulpit in stainless steel
- Stern pushpits in stainless steel with buoy bracket and emergency ladder
- Double level of stainless steel lifelines
- 6 aluminium mooring cleats
- Stainless steel handrails on coachroof (2)
- Deep anchor locker
- Electric 12 V windlass 1 000 W - 10 mm chain
- Long fixed tinted windows along coachroof
- Fixed cockpit windows in the aft cabins (2)
- Large, fixed hull ports (6)

- Opening ports in the roof (4)
- Opening deck flush hatches (7)
- Opening ports towards cockpit in the aft cabins (1 per cabin)
- Opening ports towards side-deck in the aft cabins (1 per cabin)
- **Custom double guard lines and stainless steel stanchions**
- **Transom protection**
- **Eyebow on lateral windows**
- **Outboard engine bracket**
- **Stainless steel anchor and galvanized chain**

COCKPIT

- Walk-in access to side decks, enabling to walk around the deck without crossing any steps
- Large cockpit table with compass, cup holders, cockpit light switch, handrails, LED lighting, bottle storage
- Wooden Inlay on bench seats, helm stations and transom platform
- Fixed coaming with ideal height for comfort and safety
- Cockpit lockers: 1 on starboard side, 1 on port side, 1 large locker on the cockpit floor, 1 liferaft locker
- Universal gas box, cut-off valve under the stove
- Wheels with leather wrap, stainless steel handrail, cup holders
- Emergency tiller, and fitting in cockpit floor
- Engine control: throttle lever and engine panel
- Large bathing platform with telescopic ladder, handrail and access step to the cockpit
- **Sink in cockpit**
- **Bimini and dodger**

SALOON / INTERIOR

- Comfortable seating arrangement to starboard
- **Convertible berth in saloon**
- Hinged storage compartments under settee
- Large storage between the saloon and the companionway
- Bottles storage
- Large storage behind backrests
- Large table with 2 removable aluminium legs
- Companionway with anti-sleep floor surface
- **Non-slip companionway steps**
- Large chart table with opening compartment, storage and reading light
- **Shades and mosquito screens**

GALLEY

- U-shape galley located on port side
- Counter top in Corian®, with fiddles
- Double stainless steel sinks with chrome fixtures
- Large drawer in the centre cabinet
- Soft-close, fully-extending drawers
- Waste bin
- Open storage behind the galley
- **2 burner stove**
- Fridge with front opening
- Opening hatch above the stove
- **Extra freezer in galley**

FORWARD CABINS

- Double bed
- Hanging locker
- Storage underneath the beds
- LED lighting

- Opening deck hatch
- Large fixed hull window with sliding blinds
- Blind and bugs screen for deck hatch

FORWARD HEAD

- Access from the port side cabin and from the saloon
- **1 Electric toilet**
- GRP sink furniture
- Storage with towel shelf
- Wooden shelf with fiddle
- Roof window and large deck hatch
- Indirect LED lighting
- Shower
- Shower drain with automatic switch
- Water inlet valve and connector underneath the sink
- Hook
- Mirror

AFT CABINS

- Double bed
- Hanging locker storage shelf along hull
- LED Lighting
- LED reading lights
- 1 long fixed hull port
- 1 large fixed cockpit window
- 1 opening port on coachroof
- 1 opening port towards the cockpit
- 1 opening port towards the side decks
- Blinds for each opening
- Access to tanks and technical area behind the engine

AFT HEAD

- Double access (from starboard cabin and saloon)
- **1 Electric toilet**
- GRP sink furniture
- Storage with towel shelf
- Wooden shelf with fiddle
- Large roof window
- Opening port for light and ventilation
- Indirect LED lighting
- Shower
- Shower drain with automatic switch
- Water inlet valve and connector underneath the sink
- Hook
- Mirror

ENGINE & CONTROLS

- 45 HP Yanmar engine
- Engine panel & throttle
- Insulation with fire retardant film
- Built-in muffler, air ventilation and stainless steel exhaust fitting
- Fixed 3 blade propeller
- Ventilation system extractor fan and outlets vents at the back of cockpit
- Roto moulded fuel tank 200 L / 53 US gal, fuel / water separator

ELECTRICAL INSTALLATION

- Main 12 V electrical panel at the chart table
- 12 V Circuit for house and engine system
- Domestic battery bank
- Engine start battery
- 12 V engine alternator
- Positive and negative battery switch 12 V in the aft cabin
- **Shore power cable**
- **12 V USB plugs in the cabins and in the saloon**
- **Navicolor monitoring system**
- **AGM batteries in lieu of standard and increased battery capacity**
- **Battery charger**
- **Stereo system with interior and exterior speakers**
- **Full Raymarine electronic package**
- **Fans in saloon and cabins**
- **Shore power air conditioning**
- **Solar panel**

PLUMBING INSTALLATION

- Pressurised water distributed through-out the boat via semi-rigid hose
- "Heavy-duty" water pump
- Accumulator tank for consistent water pressure
- Roto moulded tank: 330 L / 87 US gal
- **Extra roto moulded tank: 200 L / 53 US gal**
- Tank gauges (1 per tank)
- Tank manifold with selector valves
- Water boiler 40 L / 11 US gal
- Hot and cold cockpit shower on transom
- Electrical shower pumps, self-activating
- Black water tank 50 L / 13 US gal, with gravity drain and deck fitting (1 per head)
- Electric bilge pump located in bilge area with activation via switch at electrical panel
- Dual-action manual bilge pump located in the cockpit, with separate hose from primary bilge pump

GENERAL EQUIPMENT

- **Mooring / dock lines / fenders**
- **Safety pack**
- **Charter pack**
- **Commissioning and delivery to charter base**

NOTE

The Builder reserves the right to change or amend the contents of this document at any time without prior notification to any third party, and no liability will be accepted for errors contained within the same.